

RA 29317/001

## LEGEND:

SYMBOL	DESCRIPTION
	INTERNAL LIGHT IP65 BULKHEAD
	230V, 16A, SINGLE LEVER LIGHT SWITCH

## SPECIFICATION

PANEL MATERIAL: 3CR12 STAINLESS STEEL  
MATERIAL THICKNESS: 2mm  
POTENTIAL RATING: 220VAC, 24VDC  
TEMPERATURE: 0-55 °C  
IP RATING: IP54  
PAINT COLOR: CORNFLOUR BLUE (65-0106)  
PAINT THICKNESS: 70UM  
PANEL MOUNTING: FLOOR STANDING ON CONCRETE PLINTH  
PANEL GLANDING METHOD: GALVANIZED GLAND PLATE  
EARTH BUSBAR DIMENSIONS (WXH): 10 X 10  
BACK PLATE: SMOOTH WHITE  
CABLE ENTRY: BOTTOM  
LOCKING: KEY LOCKABLE

ALL DIMENSIONS IN mm

## REVISIONS

No	DATE	CHECKED	APPROVED	DESCRIPTION
A	19-04-15	M.MABUNDA	P.MANANA	PRELIMINARY DESIGN

NUMBER	TITLE

REFERENCE DRAWINGS



BOX 1127  
JOHANNESBURG  
2000  
TEL: +27 11 682-0911

SAP PROJECT No.:	P.OXXX	CHECKED:	
NETWORK ID No.:	400XXXX	SECTION HEAD:	
CONTRACT:	RWXXXX/XX	APPROVED:	
FILE:	RWXXXX/XX	SIGNATURE	
DRAWN BY:	M.MABUNDA	Pr Eng. No.	2012003C
TRACED BY:	D.NKOSI	DATE	20/1/2020
DATE:	2019-04-15		

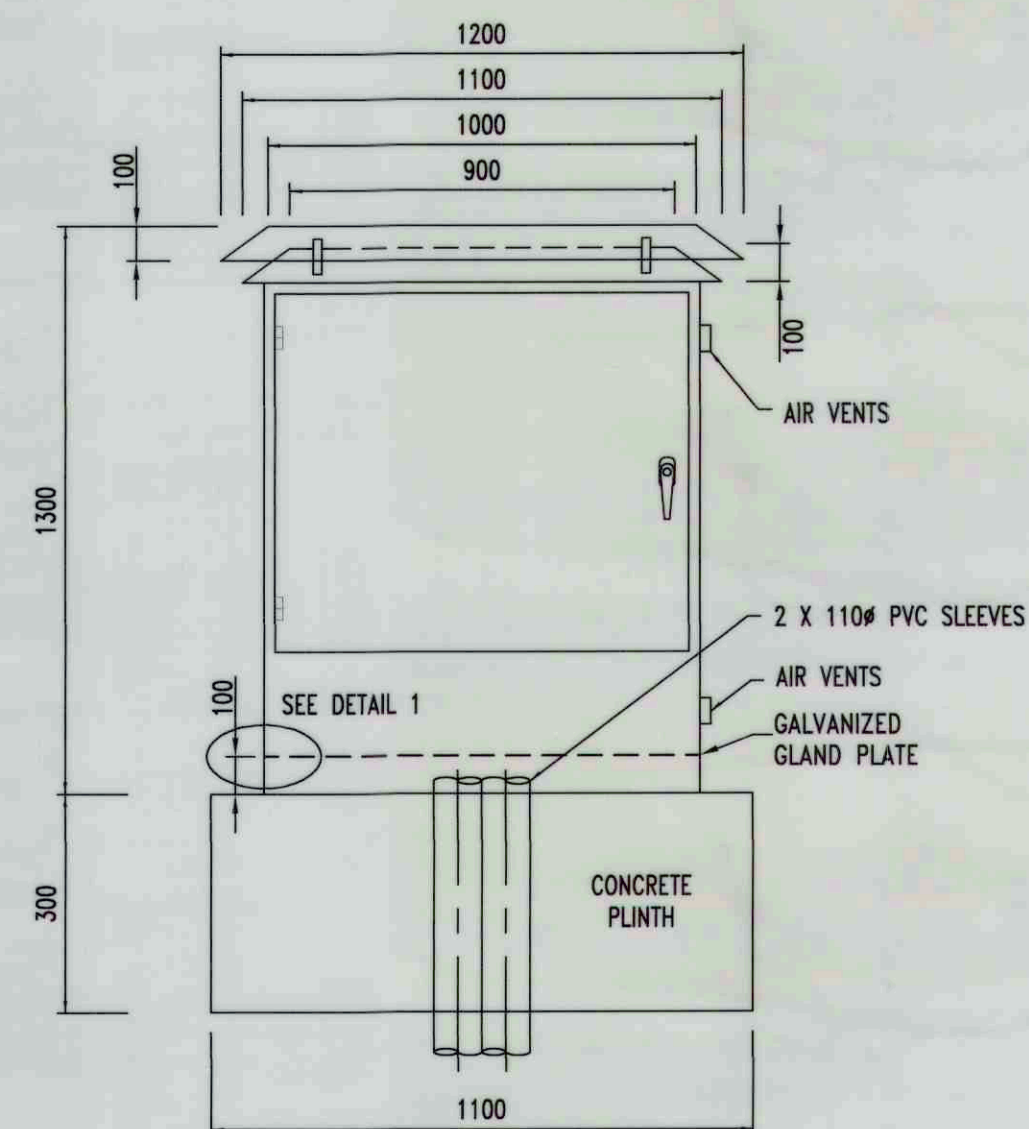
RAND WATER

STANDARD AUTOMATION KIOSK  
GENERAL ARRANGEMENT

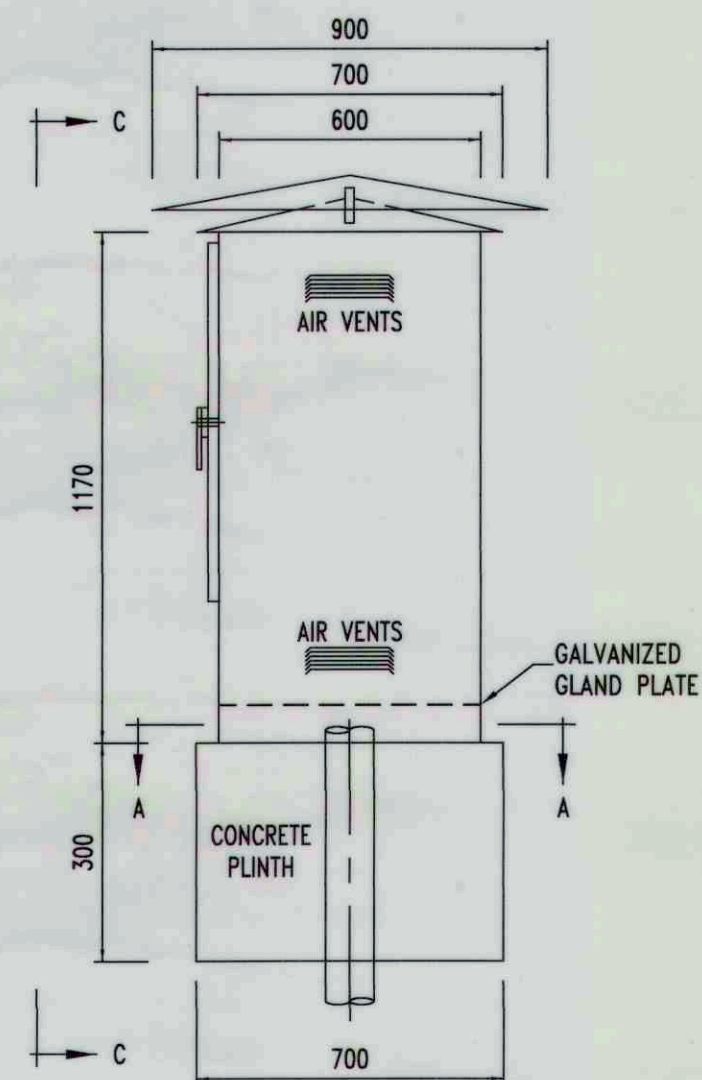
STATION	WKS	DOC. TYPE	S
X X X	X X X X X X X X X X	D E Z P	P

SCALE : N.T.S.

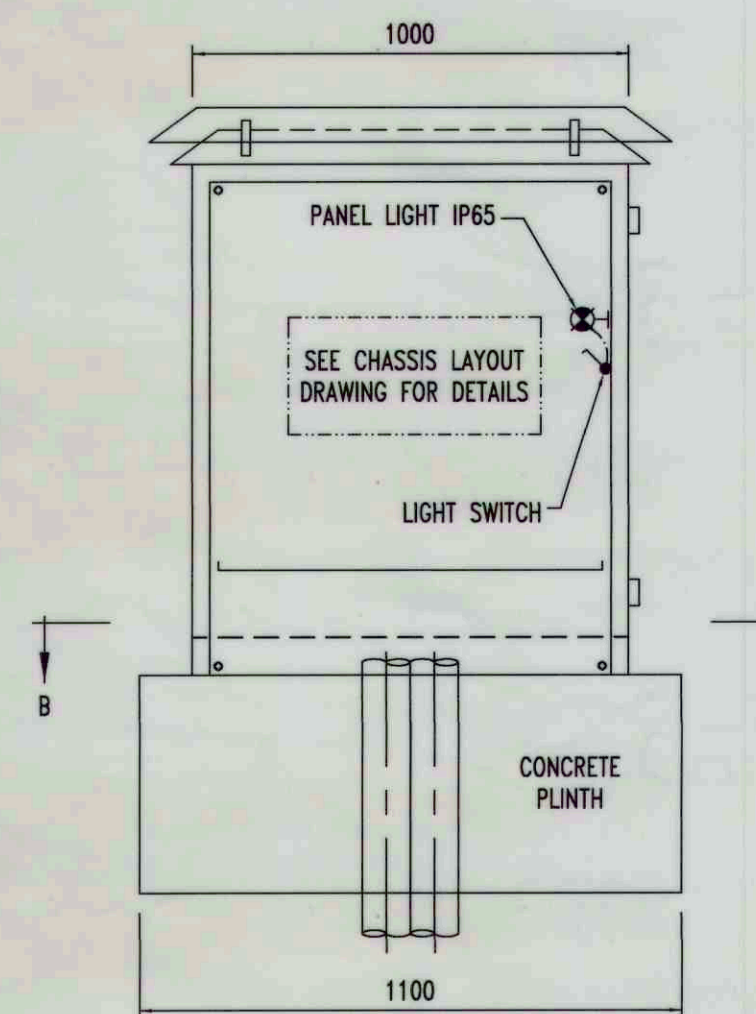
RA 29317/001

REVISION  
A

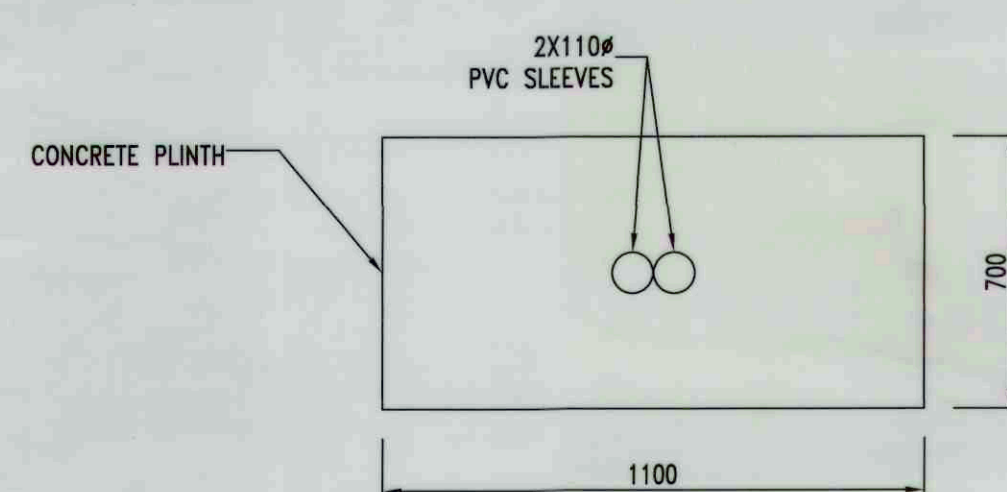
FRONT VIEW  
(DOOR CLOSED)  
SECTION C-C



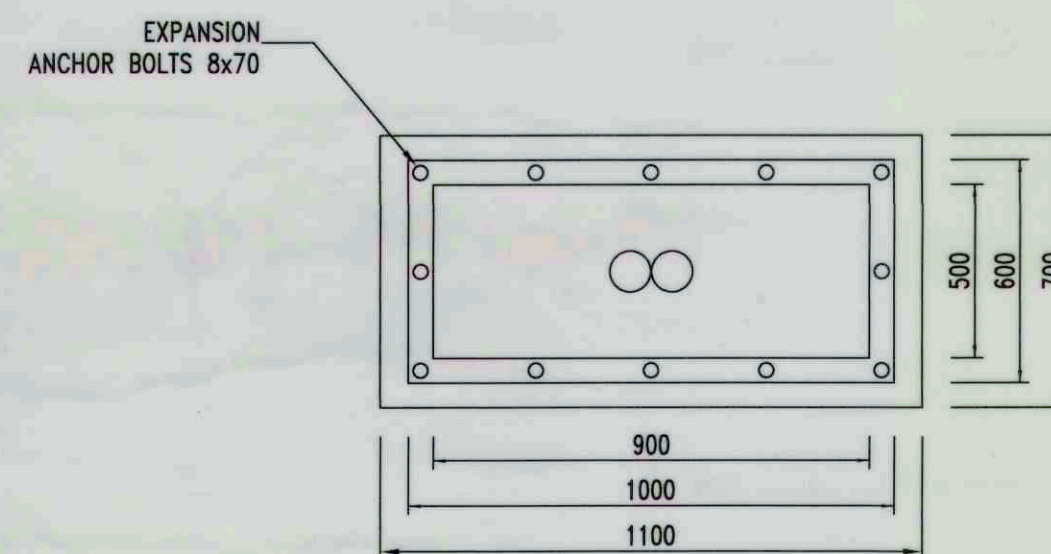
SIDE VIEW



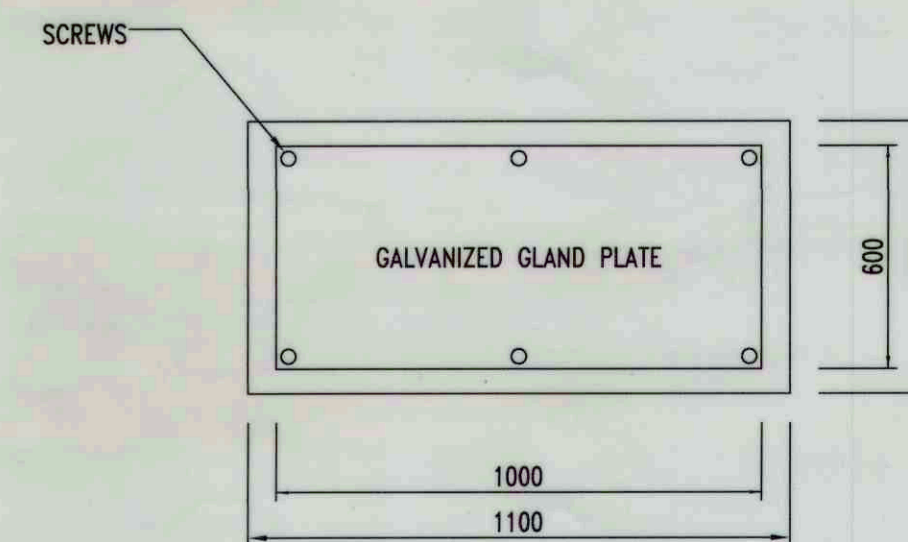
FRONT VIEW  
(DOOR OPEN)  
SECTION C-C



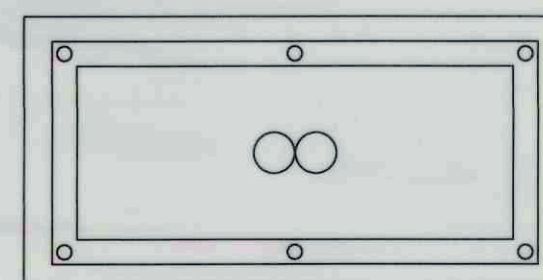
PLAN VIEW



SECTION A-A



SECTION B-B



SECTION B-B  
WITH GALVANIZED  
GLAND PLATE REMOVED

FOR TENDER PURPOSES